

200 sq ft power

9 compartments

19' clear hts.

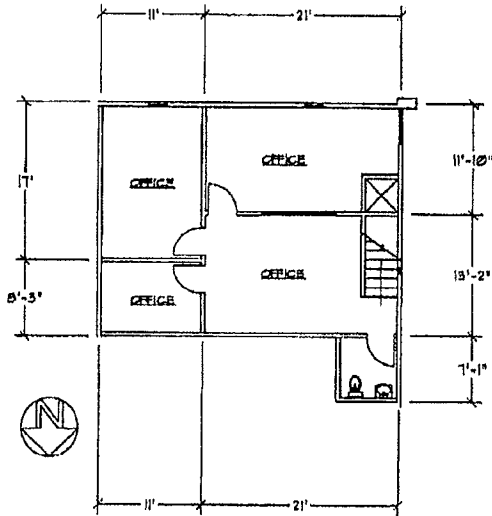


337 Van Ness Way, Suite 100, Torrance, CA 90501
Post Office Box 3217, Torrance, CA 90510-3217
Phone 310-533-5900 Fax 310-533-0775
surfmanagement.com

MONTEREY BUSINESS PARK 2771 Plaza Del Amo Suite 807 Torrance, California 90503

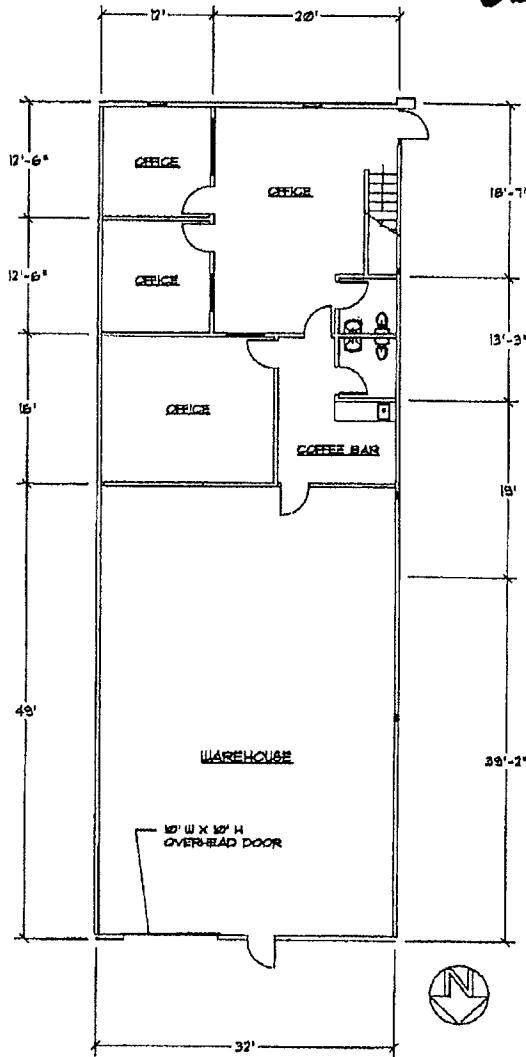
Scale 1/16" = 1'
Date of drawing 01-06-17
Date of revision 00-00-00

4 OFFICES



SECOND FLOOR

4 OFFICES + COFFEE BAR



FIRST FLOOR

*** 1568 SF WHLIE**

*** 2157 SF OFFICE**