

FOR SALE OR LEASE

Mixed Use: Office, Retail, Warehouse

1508 Pacific Coast Highway | Harbor City, Ca. 90710



LOCATION BENEFITS

- › 2 Story Bldg: 5280 Square feet
- › Land: 8015 square feet
- › Built in 1979
- › Zoning LAC2
- › Freestanding with private yard
- › Driveway from front to back
- › 2 HVAC units
- › Close to Palos Verdes, Torrance
- › \$200,000 of improvements
- › For sale: \$1,090,000
For lease: First floor: \$1.00 psf, Second floor: \$.89 psf.

If you need office, retail, warehouse space and open meeting areas and desire a Pacific Coast Highway address, this is the building for you. Featuring a two story design with ample natural light, a driveway from front to back, secured yard and \$200,000 of improvements, this property offers unique features benefitting an owner user.

First floor features 3 private offices, conference room, restroom and large open office. Warehouse of approximately 820 square feet.

Second floor features, 3 private rooms, conference room, kitchen and 2 bathrooms with high open ceiling and natural skylights for energy savings.

Close access to the Harbor 110 Freeway, and centrally located to Carson, Lomita, RPV, San Pedro, Torrance and Wilmington.

To receive more information and schedule a tour, please call Arnold Ng, MBA, CCIM at 310-714-9500.

APEX Commercial Real Estate Inc.

21250 Hawthorne Blvd. Suite 500 • Torrance, CA. 90503

Office: 310-377-3456

Mobile: 310-714-9500

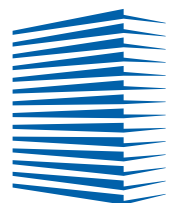
Fax: 310-541-9126

BRE: 01057946

www.apexcir.com

e-mail: ang@apexcir.com

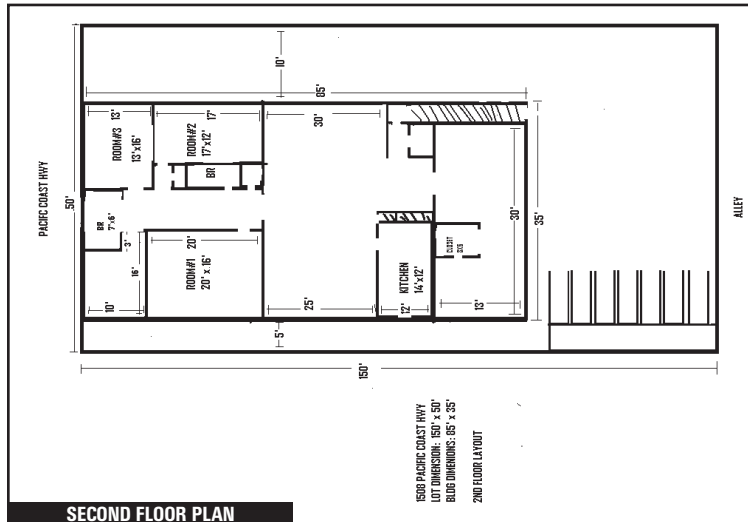
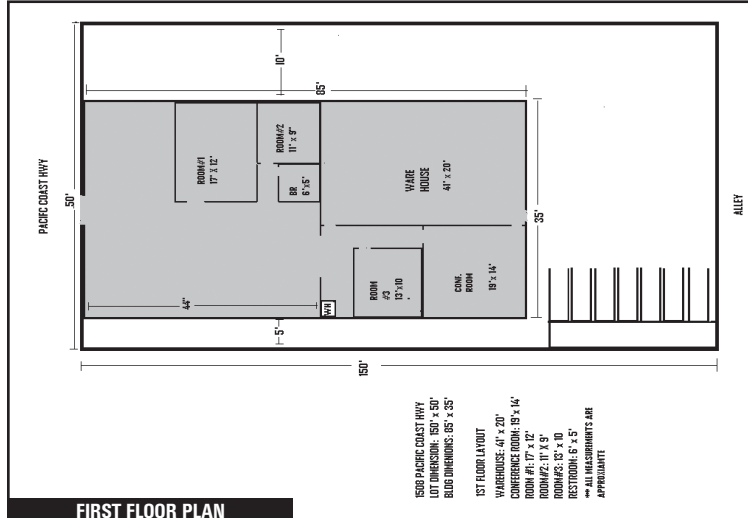
APEX
Commercial Real Estate



FOR SALE OR LEASE

1508 Pacific Coast Highway | Harbor City, Ca. 90710

SITE PLANS



AERIAL MAP

